



MOHOC® & MOHOC® IR VISIBLE LIGHT & INFRARED MODELS

MOHOC® Cameras revolutionize form-factor, ruggedization, and user interface. The patented helmet-contoured base and low-profile housing eliminate snag hazards.



LENS ROTATION

Infinite mounting options and filming perspectives



DUAL POWER

Two CR123A or rechargeable Li-ion for battery versatility



LIVE STREAMING WI-FI APP

Securely connect & control with iOS or Android devices

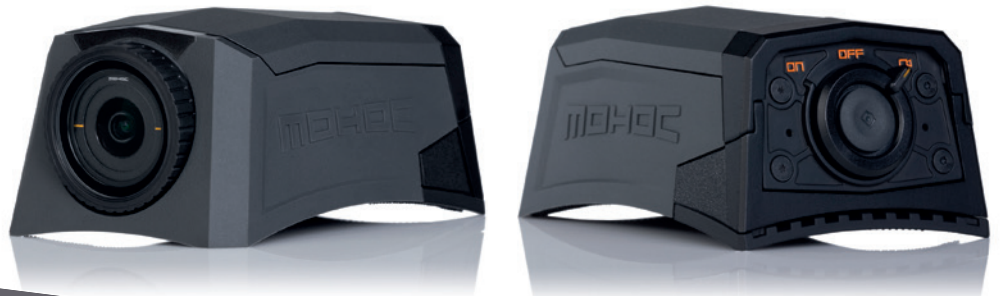
Waterproof to 10m/33ft and drop-proof to 2m/6.5ft, MOHOC® is military-grade tough and IP68 rated. Its single button tactile control with vibration feedback enables intuitive operation even in the harshest conditions.

MOHOC® Cameras capture razor-sharp 1080p HD video and 12MP photos in visible light, low light, and white light.

The MOHOC® IR model also captures images in total darkness when used with infrared illumination (records in black & white).

Tactically designed MOHOC® Cameras are front-line video sensors for the hyper-enabled operator to enhance situational awareness.

As an integral part of the C5ISR tactical operating network, MOHOC® Cameras are essential for obtaining, gathering and processing real-time data to maintain operational superiority.



GENERAL SPECIFICATIONS

PATENTS ISSUED & PENDING	
DIMENSIONS (L X W X H)	89 mm (3.50 in) x 53 mm (2.01 in) x 43 mm (1.69 in)
WEIGHT	202 gm with Li-Ion rechargeable battery
VIDEO	1080p at 60/30 FPS Full HD. 720p at 120/60/30 FPS
PHOTO	12 MP. Manual photo, photo burst, time lapse (photo every 60, 30, 5, or 3 seconds)
IMAGE QUALITY (MOHOC®)	Full HD Color in visible light
IMAGE QUALITY (MOHOC® IR)	Full HD Black & White in visible and IR light spectrum from 420nm to 950nm
DUAL CAPTURE	Ability to take still photos while simultaneously recording video
WATERPROOF	10 meters (33ft). IP68 rated in standard case (without additional case or housing)
DURABILITY	2 meter (6.5ft) drop test
MICROPHONE	Stereo
WIRELESS	WiFi 802.11b/g/n
MEMORY	MicroSD™ card compatible up to 64GB. Class 10 or higher required. Card not included
BATTERY	5+ hrs operation with 2x CR123A Lithium batteries (not included) and 2 hr 45 minutes with MOHOC® Li-Ion Rechargeable battery pack (included)
CONNECTIVITY	Charge and sync with USB (cable included) and HDMI for playback
OPTICS/LENS	Aperture F2.8, 140° Field of View, and CMOS Sensor
LOW LIGHT	Auto adjustment for optimal recording in low light environments
ROTATING LENS	Manually rotate lens up to 190° to record horizontal video from any mounting position
SECURE ATTACHMENT	Velcro® attachment direct to helmet or helmet cover. Lanyard included to tether for additional security
ADDITIONAL SETTINGS	Loop recording, video orientation adjustment, date & time stamp, and power save mode
KIT INCLUDES	MOHOC® Camera, 1100mAh Rechargeable battery, 2 Velcro® mounting strips, USB cable, lanyard and bag

Contact MOHOC to learn more.

+1.208.806.1391

info@mohoc.com

www.mohoc.com

Patents issued & pending.
Trademarks registered & pending.
© 2022 MOHOC, Inc. All rights reserved.